

How to make a referral to Marie Enfant Rehabilitation Centre



Centre de
Réadaptation
Marie Enfant

CHU Sainte-Justine

Université 
de Montréal



INTRODUCTION TO MARIE ENFANT REHABILITATION CENTRE...IN SUMMARY

MARIE ENFANT REHABILITATION CENTRE'S (MERC) SPECIFIC CLIENTELE

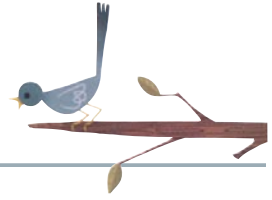
Clients referred to the MERC have motor or speech disabilities (with or without related disorders). Various diagnosis or characteristics further define the clientele.

Among clients having *language deficits*, characteristics include:

- Speech-Language impairment for example, language delays, stuttering, speech fluency difficulties.
- Auditory processing disorder (APD), formerly known as “central auditory disorder”

Motor disabilities pertain mainly to anomalies of the neurological or musculoskeletal systems. They include the following diagnosis or characteristics:

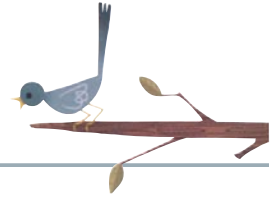
- Vasculocerebral accidents
- Achondroplasia (small size children) and other bone dysplasias
- Amputations or congenital malformations
- Arthrogryposis
- Arthritis
- Spinal cord injuries
- Severe orthopedic injuries
- Idiopathic scoliosis
- Cerebral motor deficits
- Musculoskeletal lesions
- Brachial plexus injuries
- Neuromuscular diseases
 - Spinal amyotrophy
 - Damage to the anterior horn
 - Ataxia



- Charcot-Marie-Tooth disease
 - Various types of myopathies
 - Various types of dystrophies
 - Various types of neuropathies
 - Charlevoix Saguenay neuroencephalopathies
 - Ossifying fibromuscular hyperplasias
 - Myotonias
 - Polyomyelitis
 - Anderman syndrome or Charlevoix Saguenay polyneuropathies, with or without agenesis of the corpus callosum
 - Other diagnosis related to a degenerative disease
- Premature babies
 - Developmental delays or disorders
 - Severe burns sequelae
 - Brain tumors or meningitis sequelae
 - Spina-bifida
 - Head injuries

MARIE ENFANT REHABILITATION CENTRE SERVICES :

- Adaptation-rehabilitation services as well as support to social participation (provided by rehabilitation professionals in various fields).
- A variety of housing and respite accommodations for young French-speaking clients (residing on the Montreal Island) with significant and persisting disabilities stemming from a physical impairment (motor, auditory, speech/language or visual).
- An intensive functional rehabilitation unit (IFRU) which provides a living environment to children and teenagers requiring intensive rehabilitation services while receiving medical care services.



- In collaboration with our partners, namely the Raymond-Dewar Institute (speech-language disorders) and the MAB-Mackay Centre (motor and speech-language disorders), the Montreal territory has been divided into different regions, so certain clients are referred to one of these locations according to their place of residence (see table attached).

REFERRALS

Clients are directed to the MERC *upon referral* by a health care professional, a CSSS, a hospital centre or the private sector, following an evaluation that reveals possible significant and persisting impairments related to motor or language disorders, or developmental delays. The admission, evaluation and orientation service (AEO) will assess the eligibility of the client and forward the request for services to the relevant program. Both the client and referring party will be informed of the decision in writing.

The referral must be directed to the MERC's medical records service along with all required documents.

Medical Records service 5200, Bélanger St., Montreal, Quebec H1T 1C9
Tél. : 514 374-1710 ext. 8012 • Fax : 514 723-7127



DOCUMENTS TO SUBMIT WITH A REQUEST FOR SERVICE to the Marie Enfant Rehabilitation Centre

Clients	MANDATORY DOCUMENTS	IF AVAILABLE: DOCUMENTS TO SUBMIT WITH A REQUEST FOR SERVICE
Motor Impairments	DSIE with mandatory sections completed + Medical diagnosis + Medical restrictions, if any	File summary Hospitalization summary Medical reports (pediatrician, neurologist, physiatrist, orthopedist, etc.) Additional relevant tests (RX, videofluoroscopy, otoacoustic emission, etc.) Professional assessments (special education teacher, occupational therapist, speech therapist, physiotherapist, psychologist, etc.) Personalized intervention plans, service plans, etc. Psychosocial background All other relevant documents
Developmental Disorders	DSIE with mandatory sections completed + Professional reports (doctor, occupational therapist, physiotherapist, speech therapist, psychologist, etc.) that indicate any of the child's significant and persisting motor and developmental disabilities + Medical restrictions, if any	File summary Hospitalization summary Medical reports (pediatrician, neurologist, physiatrist, orthopedist, etc.) Additional relevant tests (RX, videofluoroscopy, otoacoustic emission, etc.) Professional assessments (special education teacher, occupational therapist, speech therapist, physiotherapist, psychologist, etc.) Personalized intervention plans, service plans, etc. Psychosocial background All other relevant documents

DOCUMENTS TO SUBMIT WITH A REQUEST FOR SERVICE to the Marie Enfant Rehabilitation Centre

Clients	MANDATORY DOCUMENTS	IF AVAILABLE: DOCUMENTS TO SUBMIT WITH A REQUEST FOR SERVICE
<p>Speech and Language Disorders (primary language disorder, stuttering, auditory processing disorder)</p>	<p>DSIE with mandatory sections completed</p> <p>For clients with a primary language disorder</p> <ul style="list-style-type: none"> • Speech therapy report with diagnosis or hypothesis of diagnosis, documenting the child’s significant and persisting disabilities <p>For clients who stutter</p> <ul style="list-style-type: none"> • Medical or speech therapy report, documenting the persistence of the stuttering disorder over a period of six months <p>For clients with an auditory processing disorder</p> <ul style="list-style-type: none"> • Audiology report, confirming the auditory processing disorder 	<p>Hospitalization summary</p> <p>Medical reports (pediatrician, neurologist, physiatrist, orthopedist, etc.)</p> <p>Additional relevant tests (RX, videofluoroscopy, otoacoustic emission, etc.)</p> <p>Professional assessments (special education teacher, occupational therapist, speech therapist, physiotherapist, psychologist, etc.)</p> <p>Personalized intervention plans, service plans, etc.</p> <p>Psychosocial background</p> <p>All other relevant documents</p>

Marie Enfant Rehabilitation Centre

Distribution of the pediatric clientele with a physical impairment, according to CSSS territory

CSSS	Speech-Language impairments		Motor impairments	
	English	French	Developmental disorders Cerebral motor disorders Spina-bifida	Other clientele*
1 L'OUEST-DE-L'ÎLE • CLSC DE PIERREFONDS • CLSC DU LAC-SAINT-LOUIS	MAB-Mackay	MAB-Mackay	MAB-Mackay	CRME
2 DORVAL\LACHINE\LASALLE • CLSC DE DORVAL-LACHINE • CLSC DE LASALLE	MAB-Mackay	IRD	MAB-Mackay	CRME
3 SUD-OUEST\VERDUN • CLSC DE SAINT-HENRI • CLSC DE VERDUN • CLSC DE VILLE-EMARD-COTE-SAINT-PAUL	MAB-Mackay	IRD	MAB-Mackay	CRME
4 CAVENDISH • CLSC DE NOTRE-DAME-DE-GRACE-MONTREAL-OUEST • CLSC RENE-CASSIN	MAB-Mackay	MAB-Mackay	MAB-Mackay	CRME
5 DE LA MONTAGNE • CLSC DE COTE-DES-NEIGES • CLSC DE PARC-EXTENSION • CLSC METRO	MAB-Mackay	CRME	MAB-Mackay	CRME
6 DE BORDEAUX\CARTIERVILLE\ST-LAURENT • CLSC DE BORDEAUX-CARTIERVILLE • CLSC DE SAINT-LAURENT	MAB-Mackay	IRD	CRME	CRME
7 D'AHUNTSIC\MONTRÉAL-NORD • CLSC D'AHUNTSIC • CLSC DE MONTREAL-NORD	MAB-Mackay	CRME	CRME	CRME

Marie Enfant Rehabilitation Centre

Distribution of the pediatric clientele with a physical impairment, according to CSSS territory

CSSS	Speech-Language impairments		Motor impairments	
	English	French	Developmental disorders Cerebral motor disorders Spina-bifida	Other clientele*
8 DU CŒUR DE L'ÎLE <ul style="list-style-type: none"> • CLSC DE LA PETITE-PATRIE • CLSC DE VILLERAY 	MAB-Mackay	IRD	CRME	CRME
9 JEANNE-MANCE <ul style="list-style-type: none"> • CLSC DES FAUBOURGS • CLSC DU PLATEAU-MONT-ROYAL • CLSC SAINT-LOUIS-DU-PARC 	MAB-Mackay	IRD	CRME	CRME
10 ST-LÉONARD\ST-MICHEL <ul style="list-style-type: none"> • CLSC DE ST-LÉONARD • CLSC ST-MICHEL 	MAB-Mackay	CRME	CRME	CRME
11 LUCILLE-TEASDALE <ul style="list-style-type: none"> • CLSC DE HOCHELAGA-MAISONNEUVE • CLSC DE ROSEMONT • CLSC OLIVIER-GUIMOND 	MAB-Mackay	IRD	CRME	CRME
12 DE LA POINTE DE L'ÎLE <ul style="list-style-type: none"> • CLSC DE MERCIER-EST-ANJOU • CLSC DE POINTE-AUX-TREMBLES-MONTREAL-EST • CLSC DE RIVIERE-DES-PRAIRIES 	MAB-Mackay	CRME	CRME	CRME

*The **MERC** provides ultra-specialized services to all clients with motor impairments

MERC: Marie Enfant Rehabilitation Centre ▪ **IRDI:** Raymond-Dewar Institute
MAB-Mackay: MAB-Mackay Rehabilitation Centre



Centre de
Réadaptation
Marie Enfant

CHU Sainte-Justine

5200, Bélanger St., Montreal, Quebec H1T 1C9
 Telephone: 514 374-1710
<http://www.crme-sainte-justine.org>

